



SaaS: Enterprise Facility and Energy Management

Description

enteliCLOUD is a web-based SaaS (Software-as-a-service) engineering and management tool that connects all your equipment and facilities, and gives facility managers and engineers convenient access to building management operations and energy analytics through a web browser.

As a hosted instance, enteliCLOUD offers the same features as an on-premises solution at a lower overhead cost and with easier deployment and upgrades. With enteliCLOUD, you can focus on your business and enhance the services offered to your customers.

- ▶ **Centralized Facility Management** and make it easy to integrate scheduling, alarm management and operations. Connect to all of your buildings under a single login without having to network everything together. Track all building automation system (BAS) changes by service personnel, partner technicians and facility managers in enteliCLOUD.
- ▶ **Secure.** Your data security is important to us. We employ encryption in transit and at rest. BACnet Secure Connect is used to authenticate and encrypt communication between the cloud and physical sites. Two factor authentication is also enforced for server access across the enteliCLOUD system.
- ▶ **Scalable.** enteliCLOUD is built on platforms that allow you to scale instances to match the growing number of I/O points and devices.

Specifications

BACnet Protocol Rev 14

BACnet Device Profile

Advanced Operator Workstation (B-AWS)

Client Browser

Windows Internet Explorer® 11 and higher

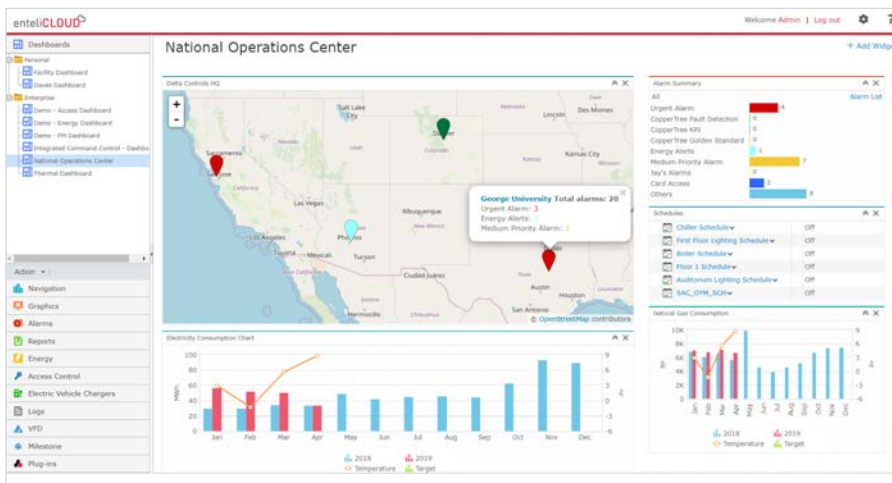
Firefox® 70 and higher

Google Chrome™ 78 and higher

Safari® 13 and higher for Mac

Microsoft Edge 44 and higher

Requires Internet connection



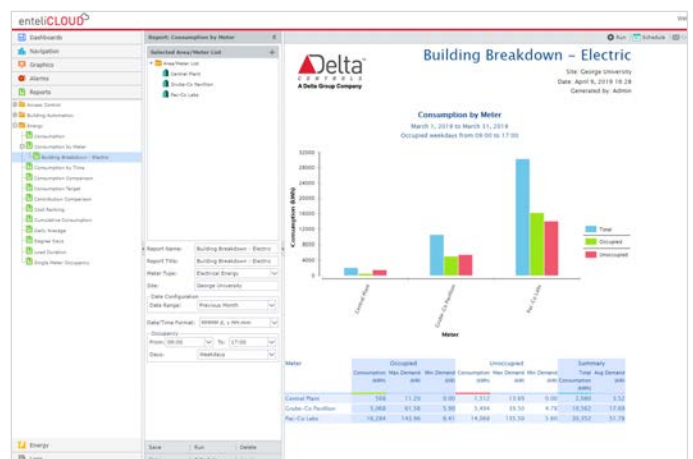
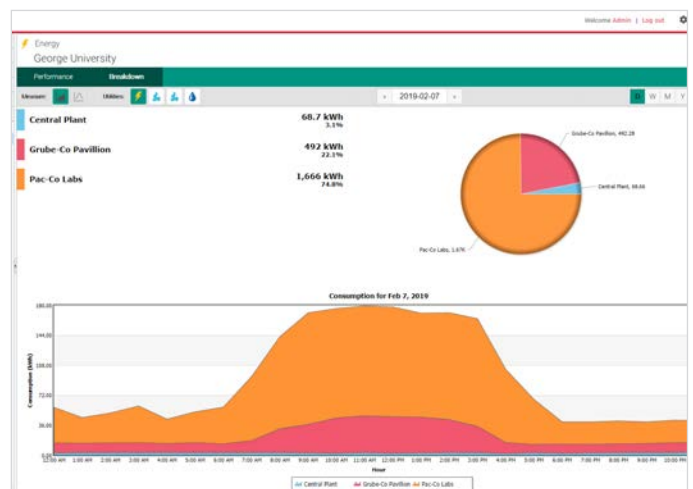
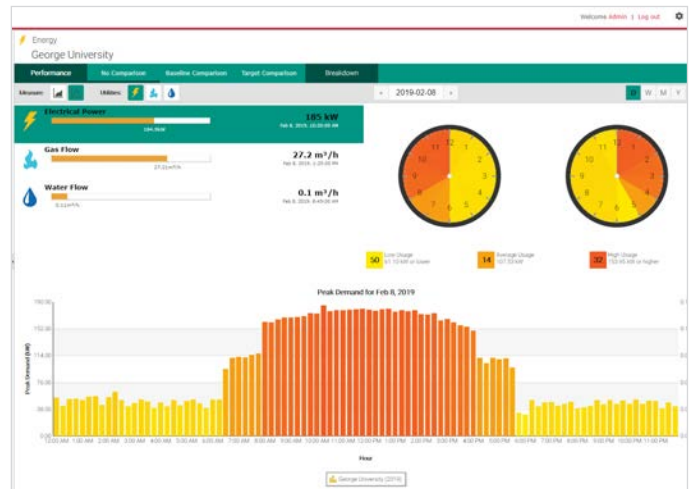
enteliCLOUD[®]

enteliCLOUD Energy

enteliCLOUD Energy is an enterprise energy management package that makes it easy for anyone to understand the energy usage of their building.

Leveraging the rich dashboard interface of enteliCLOUD, you have the tools to view your system's energy usage, set target energy goals and compare your energy usage against historical baselines.

- ▶ **Local or Cloud Applications.** enteliCLOUD Energy is the only energy analytics solution that scales from locally installed dashboards and reports to powerful cloud-based analytics.
- ▶ **Virtual Meters.** Find out exactly which building system is consuming too much energy without having to install costly wired meters. Virtual Meters utilize sensors and the data already gathered by the building automation system to track the energy consumption of every piece of equipment in your building, giving you unprecedented visibility into your consumption profile. You can also validate the calculated virtual meters with upstream utility meters.
- ▶ **Intuitive Dashboards.** These interactive dashboards allow you to analyze and breakdown usage to find energy savings. You can also create energy reports, and send and receive them by email.
- ▶ **Alerts and Insights.** Simple alerts to analytics-based Insights warn you in advance of potential consumption overages. Both alerts and Insights are announced in enteliCLOUD and can also be set up for email notification.

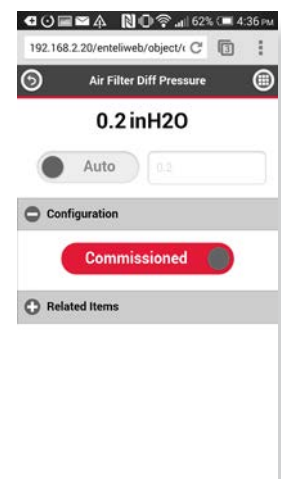
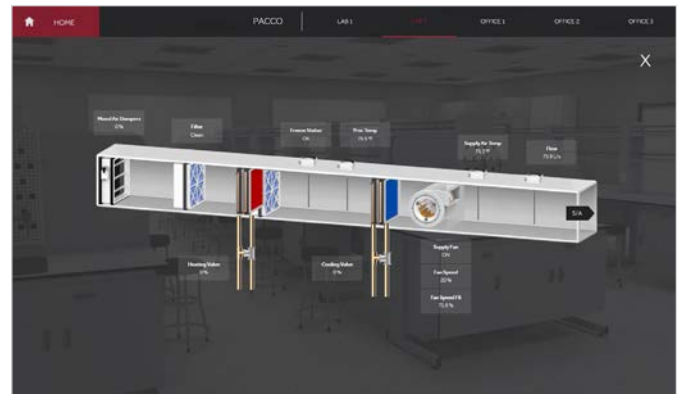
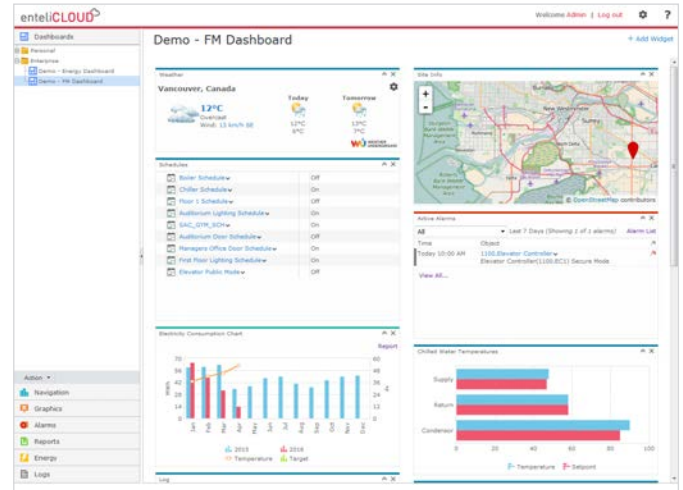


enteliCLOUD[®]

Visualizing Your Building

enteliCLOUD makes your data more accessible by presenting information in a visually attractive and user-friendly way.

- ▶ **Enterprise Dashboards.** Provide high level information in simple graphical formats to help manage the facility's key performance indicators (KPIs).
- ▶ **Personal Dashboards.** Personal dashboards are an experience you create yourself. By mixing and matching widgets, each user gets their own personalized dashboard to keep an eye on things that matter.
- ▶ **System Dashboards.** Make operating a facility easy by aggregating system graphics, alarm management, energy information and more into a single dashboard screen.
- ▶ **Navigator.** Automatically scans the BACnet network and presents devices in a logically arranged network tree. BACnet objects can be monitored and commanded directly from Navigator, or opened from Navigator to change the configuration details.
- ▶ **enteliVIZ™ Graphics.** Create HTML5-based intelligent visualizations and equipment graphics in your web browser. Use them in dashboards alongside other widgets, or as full-page standalone graphics.
- ▶ **Mobile Friendly.** Dashboard and object pages are optimized for viewing on your smartphone or tablet. Whether you just want an overview, or you need to override a point, dashboard-driven navigation makes it easy to drill down from high-level views to specific BACnet objects. Finger-friendly buttons and large text mean you don't have to pinch-and-zoom to view content.
- ▶ **Multiple Language Display.** Support your stakeholders in the language that they are most comfortable using. enteliCLOUD's user-interface can be displayed in one of 22 world languages by selecting the language preference in each user account.
- ▶ **Building Automation Reports.** Gather information about your building by querying controllers on the network and displaying them in professional-looking reports. Reports can be converted to multiple file types, such as .pdf and .xlsx and emailed automatically on a schedule.

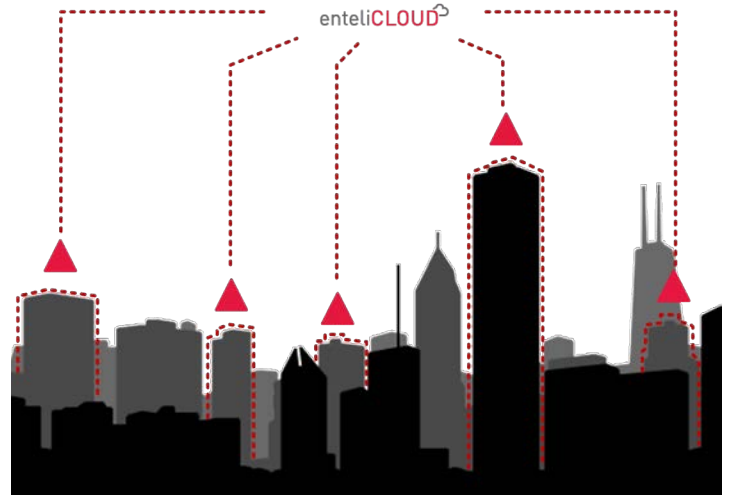


enteliCLOUD®

Centralizing Facility Management

enteliCLOUD provides you the tools to manage multiple sites more effectively.

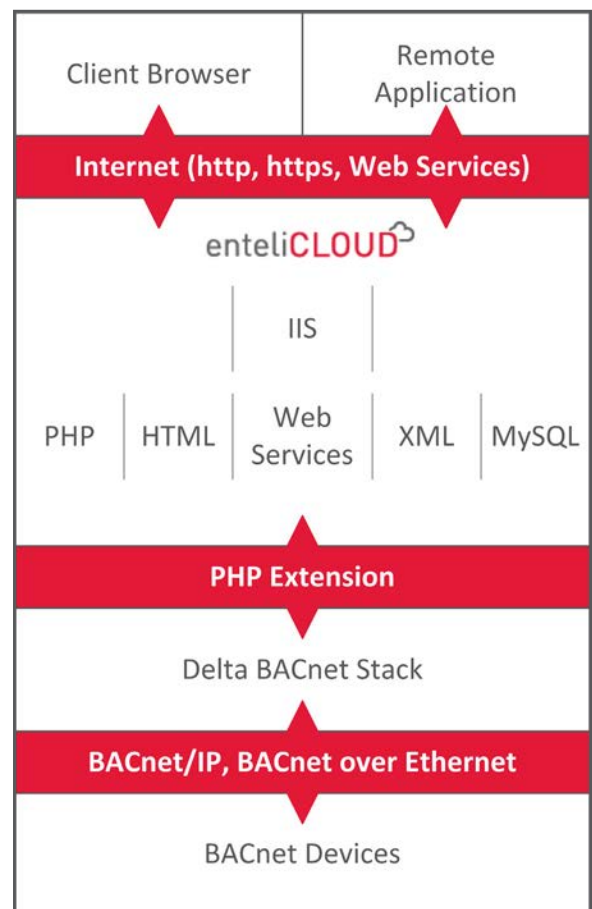
- ▶ **Single Login.** Manage multiple sites using a single login. No need to worry about duplicate addresses or networking everything together. All you need is an IP address for each site.
- ▶ **Retain Supervisory Control** of your entire portfolio of BACnet sites. Leave the other vendor's front end on-site while centralizing your alarm management, scheduling and energy analytics with enteliCLOUD.
- ▶ **Version Independent Software.** Allows organizations to operate an entire WAN without having to worry about maintaining different firmware versions in the hardware.
- ▶ **Restore and Backup.** Restore your entire BAS to an earlier state or quickly find a specific backup of a device. Schedule daily, weekly or monthly backups across devices on multiple sites.



Platform for Innovation

enteliCLOUD's suite of developmental tools allow you to create mobile apps, customize user interfaces and integrate third-party software.

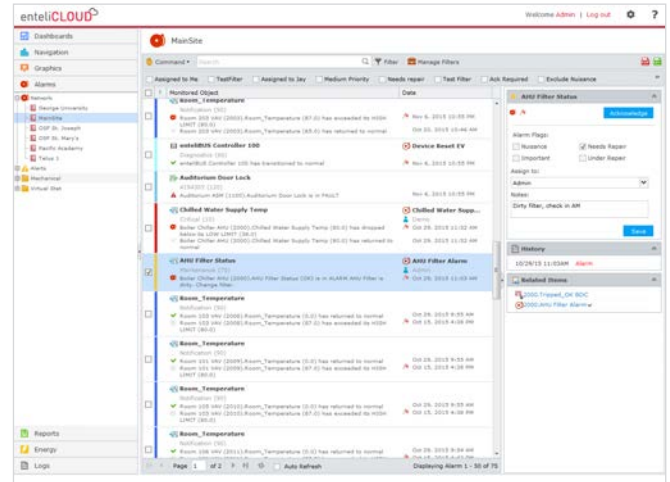
- ▶ **API Documentation Available.** The enteliCLOUD application programming interface (API) is well-documented, so that you can easily create custom modules, widgets and interfaces to third-party software.
- ▶ **BACnet Web Services.** Allow remote applications, such as mobile apps or business systems to communicate with enteliCLOUD.
- ▶ **Alarm Module.** The alarm module allows alerts and alarms from non-BACnet systems to be annunciated and managed within enteliCLOUD.
- ▶ **Open Source Reporting Package.** Design custom reports in enteliCLOUD using an industry standard open source report package.



Alarms

enteliCLOUD has a robust alarm management system that provides a detailed look at the issues and problems that come up on all your sites.

- ▶ **Comprehensive Alarm Management.** Includes intelligent visualizations, alarm assignments and operator comments on one screen. Powerful filtering, emailing and prioritization make enteliCLOUD alarm management effective even on your largest sites.
- ▶ **Alarm Widgets.** Can be added to any dashboard for a quick summary of specific data types. The maps widget uses pushpins on a map of your building locations to indicate the number and severity of alarms. The alarm list widget shows the active alarms for specific equipment and the widget can be added to system dashboards.

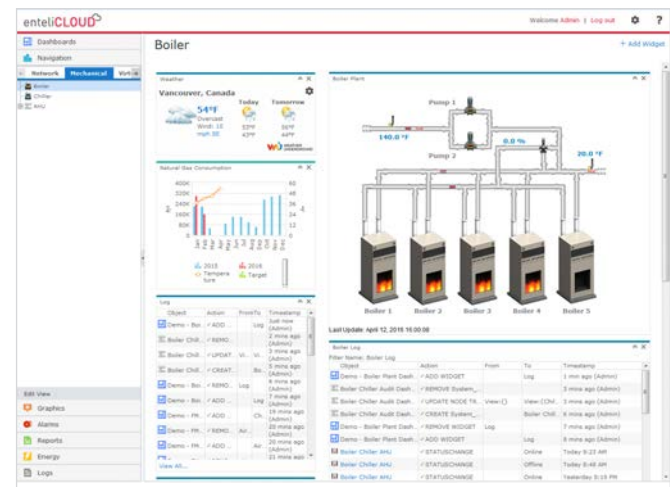


Audit Log

Audit logs provide the ability to track changes made to the system. The powerful filtering and timeline chart make it easy to find the information you're looking for, including manual changes to outputs, alarm history and any other changes made by the system's users.

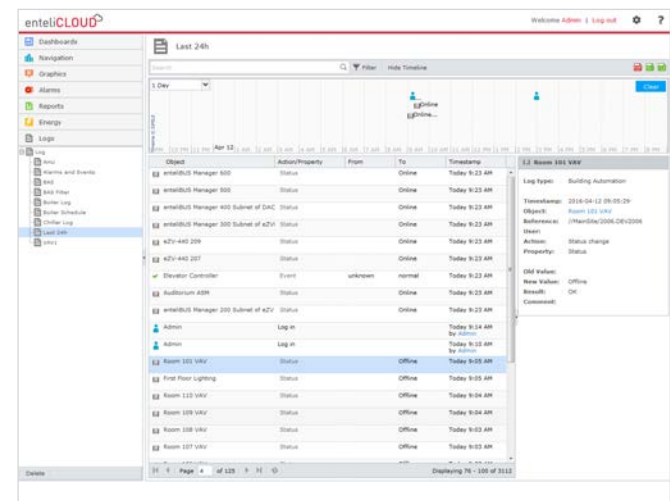
Electronic Signatures

enteliCLOUD supports electronic record regulations like FDA Code of Regulations Title 21 Part 11 by enforcing electronic signatures on modifications made in these validated environments. Signatures are recorded in the enteliCLOUD audit log. For more information, see the enteliWEB FDA 21 CFR Part 11 Compliance white paper.



User Permissions

- ▶ **User/Group Permissions.** Permissions give you the ability to assign roles and determine which BACnet objects and visualizations a user can see and interact with.
- ▶ **LDAP.** Integrate users from LDAP servers so that IT can control user access to enteliCLOUD.
- ▶ **Multi-Language Support.** Gives each user the option to select the language they want to use throughout enteliCLOUD.



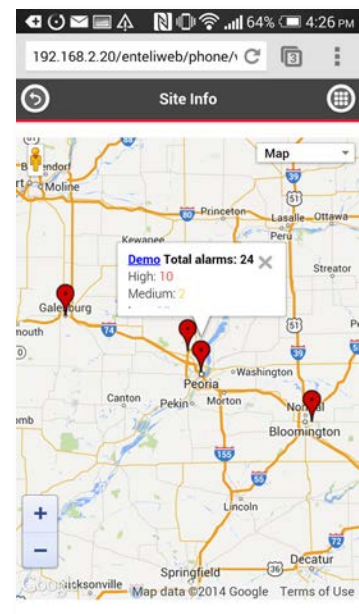
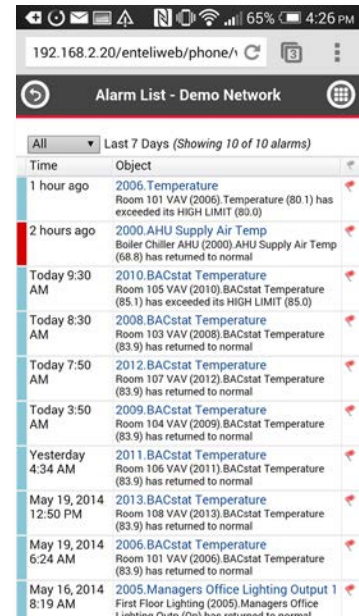
enteliCLOUD[®]

SaaS: Enterprise Facility and Energy Management

Select the right enteliCLOUD subscription package for each cloud instance based on the total number of input and output points. Optional add-ons include energy management and API (BACnet web services and mobile app).

Log into entelicloud.com to start an order. Requires an active Delta Passport account with purchasing permissions.

eW200Cloud1M	Up to 200 I/O for 1 hosted instance, includes enteliVIZ Graphics
eW500Cloud1M	Up to 500 I/O for 1 hosted instance, includes enteliVIZ Graphics
eW2500Cloud1M	Up to 2500 I/O for 1 hosted instance, including enteliVIZ Graphics
eW5000Cloud1M	Up to 5000 I/O for 1 hosted instance, including enteliVIZ Graphics
eW10000Cloud1M	Up to 10,000 I/O for 1 hosted instance, including enteliVIZ Graphics
eW20000Cloud1M	Up to 20,000 I/O for 1 hosted instance, including enteliVIZ Graphics
eW100KCloud1M	Up to 100,000 I/O for 1 hosted instance, including enteliVIZ Graphics



enteliCLOUD and enteliWEB are registered trademarks of Delta Controls Inc.. BACnet is a registered trademark of the American Society of Heating, Refrigerating and Air-Conditioning Engineers, Inc. All other trademarks are the property of their respective owners.

Published May 2020

Subject to change without notice.